



**REGIONAL SPECIALISED METEOROLOGICAL CENTRE-TROPICAL CYCLONES, NEW DELHI
TROPICAL WEATHER OUTLOOK**

DEMS-RSMC TROPICAL CYCLONES NEW DELHI DATED 06.11.2024

TROPICAL WEATHER OUTLOOK FOR THE NORTH INDIAN OCEAN (THE BAY OF BENGAL AND THE ARABIAN SEA) VALID FOR THE NEXT 168 HOURS ISSUED AT 0600 UTC OF 06.11.2024 BASED ON 0300 UTC OF 06.11.2024.

BAY OF BENGAL:

YESTERDAY'S CYCLONIC CIRCULATION OVER CENTRAL PARTS OF SOUTH BAY OF BENGAL EXTENDING UPTO 3.1 KM ABOVE MEAN SEA LEVEL PERSISTED AT 0300 UTC OF TODAY, THE 06TH NOVEMBER, 2024.

SCATTERED LOW AND MEDIUM CLOUDS WITH EMBEDDED MODERATE TO INTENSE CONVECTION LAY OVER BAY OF BENGAL, ANDAMAN SEA & ARAKAN COAST.

***PROBABILITY OF CYCLOGENESIS (FORMATION OF DEPRESSION) DURING NEXT 168 HRS:**

24 HOURS	24-48 HOURS	48-72 HOURS	72-96 HOURS	96-120 HOURS	120-144 HOURS	144-168 HOURS
NIL	NIL	NIL	NIL	NIL	NIL	NIL

***NOTE: EVERY 24HR FORECAST IS VALID UPTO 0300 UTC (0830 IST) OF NEXT DAY**

ARABIAN SEA:

YESTERDAY'S CYCLONIC CIRCULATION OVER SOUTH ARABIAN SEA HAS BECOME LESS MARKED AT 0300 UTC OF TODAY, THE 06TH OF NOVEMBER, 2024.

YESTERDAY'S CYCLONIC CIRCULATION OVER GULF OF MANNAR & ADJOINING SRI LANKA COAST HAS BECOME LESS MARKED AT 0300 UTC OF TODAY, THE 06TH OF NOVEMBER, 2024.

SCATTERED LOW AND MEDIUM CLOUDS WITH EMBEDDED MODERATE TO INTENSE CONVECTION LAY OVER SOUTH PARTS OF CENTRAL ARABIAN SEA, SOUTH ARABIAN SEA, MALDIVES & COMORIN AREA AND ISOLATED WEAK TO MODERATE CONVECTION LAY OVER LAKSHADWEEP ISLANDS AREA.

***PROBABILITY OF CYCLOGENESIS (FORMATION OF DEPRESSION) DURING NEXT 168 HRS:**

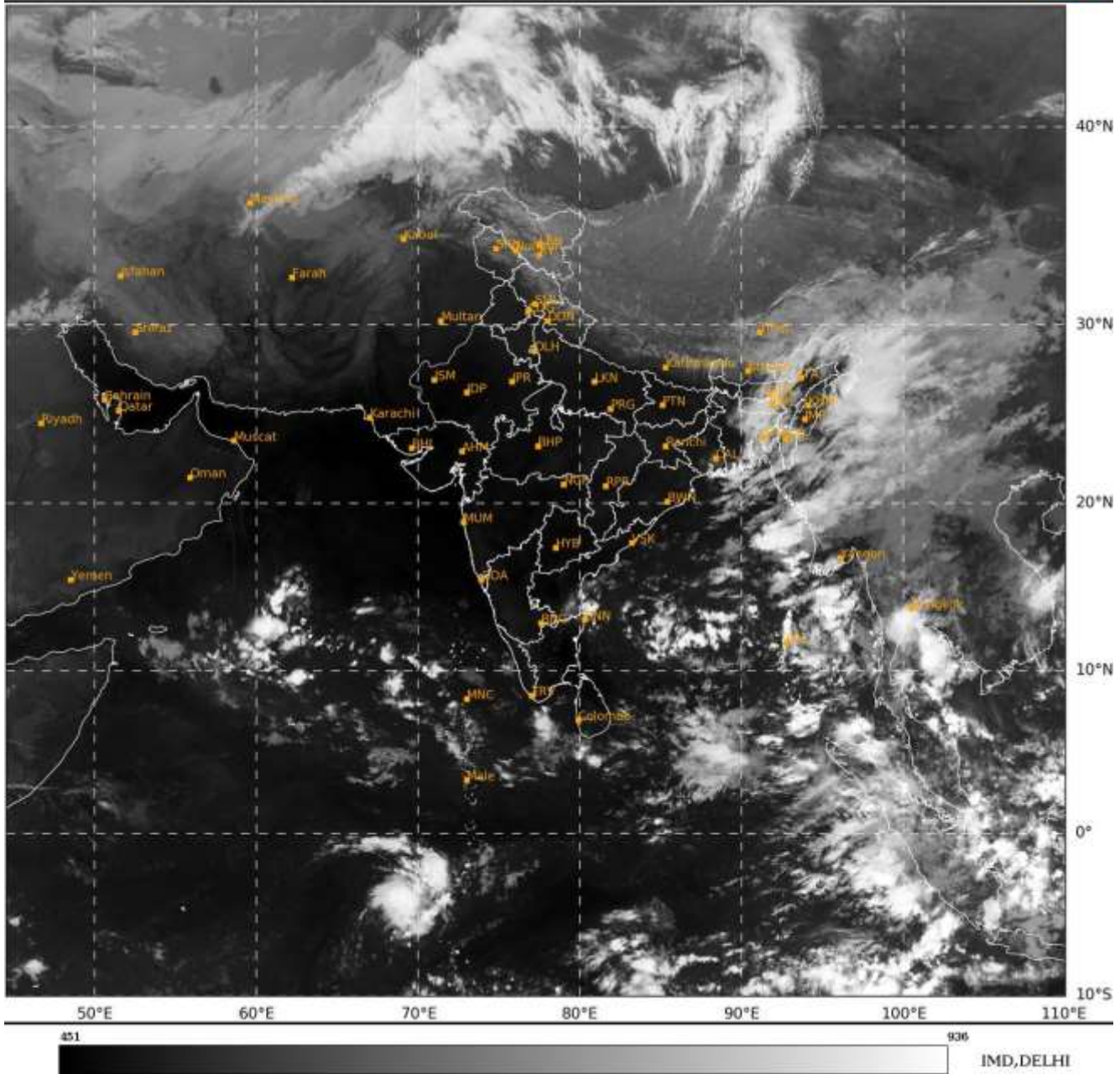
24 HOURS	24-48 HOURS	48-72 HOURS	72-96 HOURS	96-120 HOURS	120-144 HOURS	144-168 HOURS
NIL	NIL	NIL	NIL	NIL	NIL	NIL

***NOTE: EVERY 24HR FORECAST IS VALID UPTO 0300 UTC (0830 IST) OF NEXT DAY**

REMARKS: NIL.

SAT : INSAT-3DR IMG
IMG_TIR1 10.8 um
LIC Mercator

06-11-2024/(0315 to 0342) GMT
06-11-2024/(0845 to 0912) IST



Cloud distribution: (a) Isolated: <25%, Scattered:25-50%, Broken: 51-75%, Solid:>75%, Convection Intensity: (a) Weak: Cloud Top Temperature (CTT) >-25°C, (b) Moderate: CTT: - 25°C to -40°C, (c) Intense: CTT: - 41°C to -70°C and (d) Very Intense: : Less than -70°C
PROBABILITY OF CYCLOGENESIS (FORMATION OF DEPRESSION):NIL: 0%, LOW: 1-33%, , MODERATE: 34-66% AND HIGH: 67-100%
This is a guidance Bulletin for WMO/ESCAP Panel Member countries. Visit respective National websites for Country specific Bulletins